

 [thurrock.gov.uk](http://thurrock.gov.uk)

# Public Health

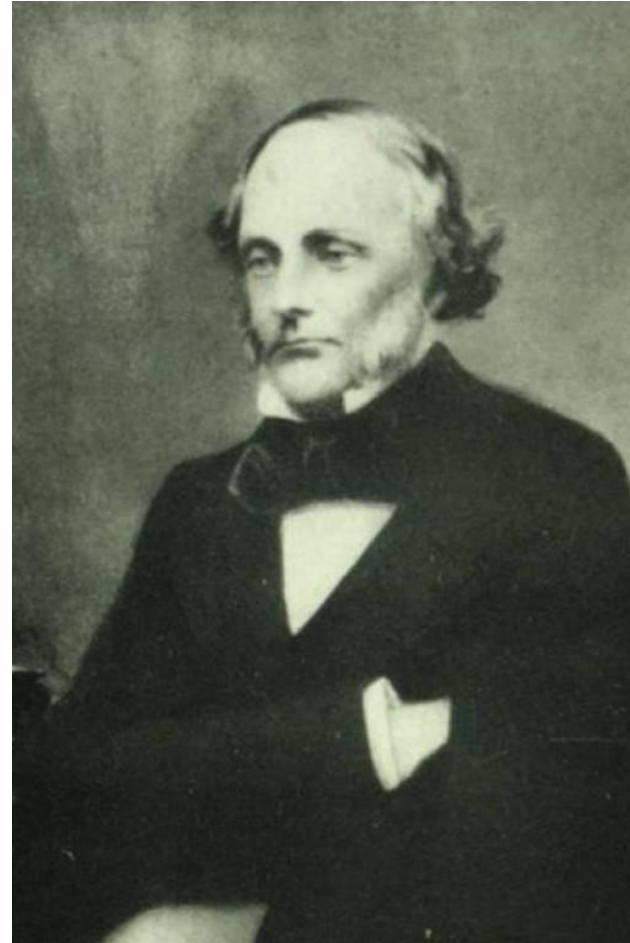
**Dr Andrea Atherton**  
**Director of Public**  
**Health**

29<sup>th</sup> July 2014



# Public Health in Local Authorities

- Dr William Duncan – appointed as Medical Officer of Health by Liverpool Town Council in 1842
- Focus of role – living conditions, sanitation & housing and control of communicable diseases
- 85% of deaths due to communicable disease before 1900

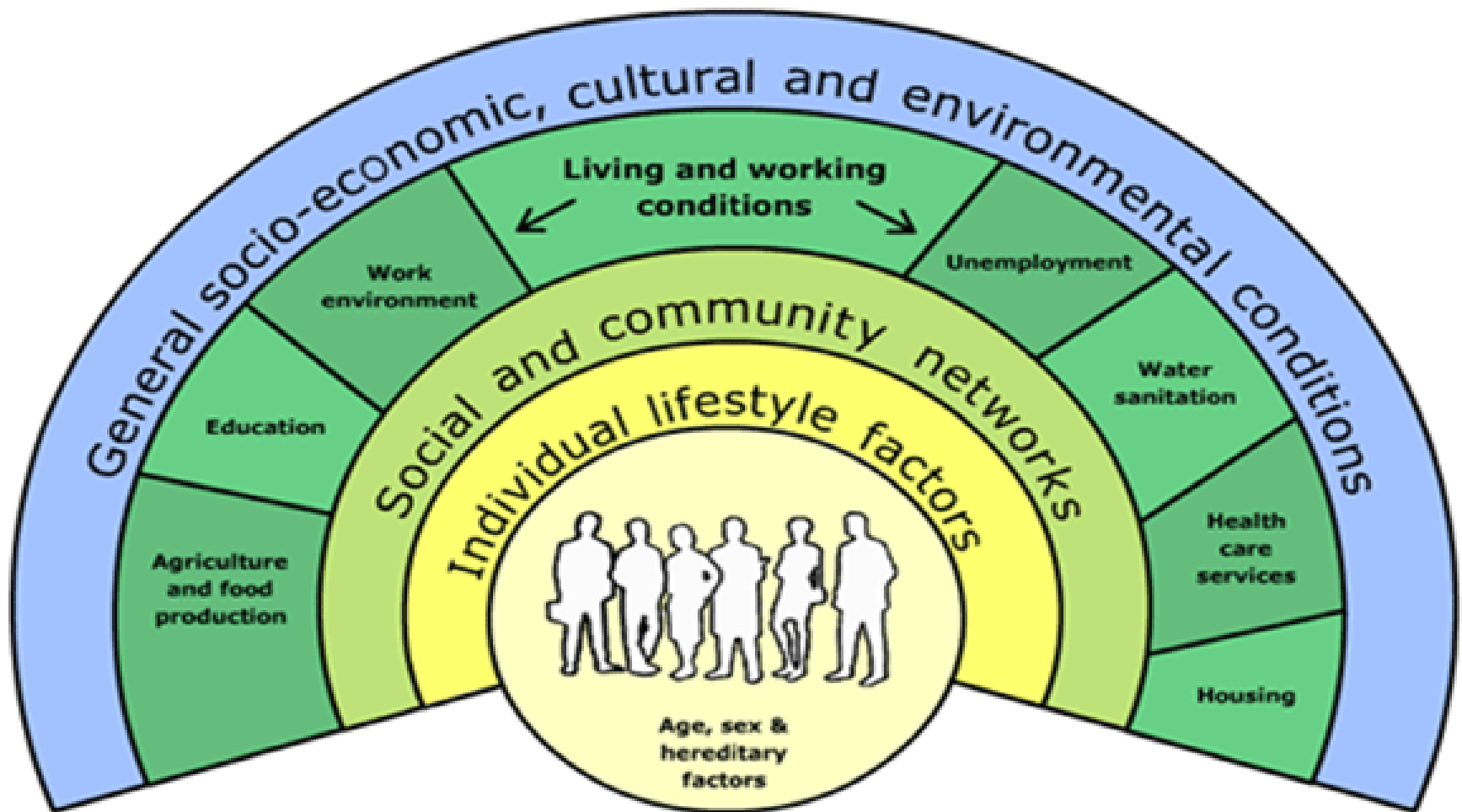


# A Definition of Public Health

Public Health is the science and art of preventing disease, prolonging life and promoting health through the organised efforts of society.

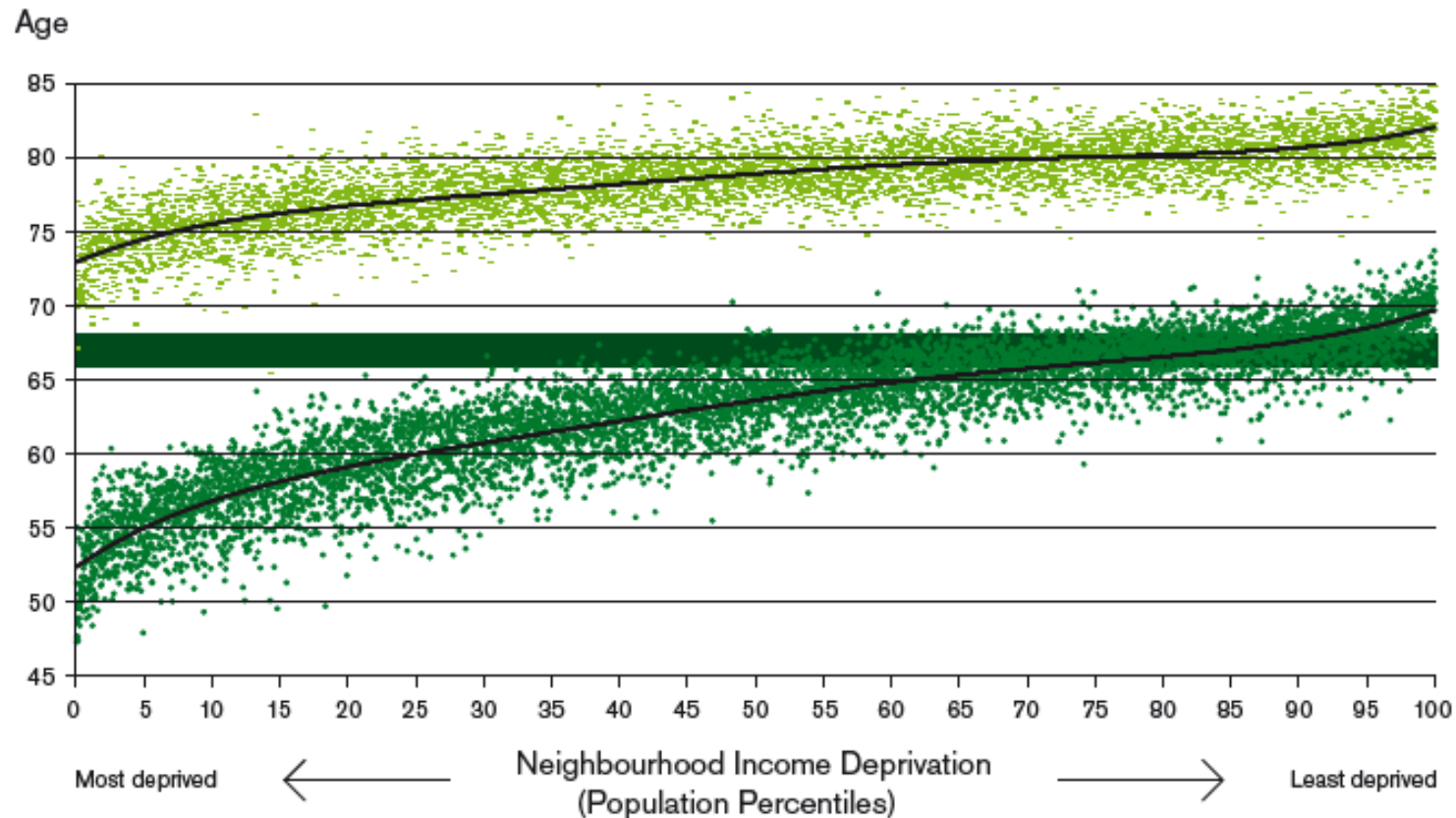
Sir Donald Acheson

# The wider determinants of health



Dahlgren and Whitehead, (1991).

# Life expectancy and disability-free life expectancy at birth, persons by neighbourhood income level, England 1999-2003



- Life expectancy
- DFLE
- Pension age increase 2026–2046

Source: Office for National Statistics<sup>5</sup>

Domain	Indicator	Local No Per Year	Local value	Eng value	Eng worst	England Range	Eng best
Our communities	1 Deprivation	21,313	13.4	20.4	83.8		0.0
	2 Children in poverty (under 16s)	7,510	22.0	20.6	43.6		6.4
	3 Statutory homelessness	69	1.0	2.4	33.2		0.0
	4 GCSE achieved (5A*-C Inc. Eng & Maths)	1,098	59.5	60.8	38.1		81.9
	5 Violent crime (violence offences)	1,907	12.0	10.6	27.1		3.3
	6 Long term unemployment	1,068	10.3	9.9	32.6		1.3
Children's and young people's health	7 Smoking status at time of delivery	272	11.4	12.7	30.8		2.3
	8 Breastfeeding initiation	1,662	69.5	73.9	40.8		94.7
	9 Obese children (Year 6)	322	19.8	18.9	27.3		10.1
	10 Alcohol-specific hospital stays (under 18)	6	15.6	44.9	126.7		11.9
	11 Under 18 conceptions	93	30.5	27.7	52.0		8.8
Adults' health and life style	12 Smoking prevalence	n/a	20.7	19.5	30.1		8.4
	13 Percentage of physically active adults	n/a	53.4	56.0	43.8		68.5
	14 Obese adults	n/a	31.4	23.0	35.2		11.2
	15 Excess weight in adults	269	70.8	63.8	75.9		45.9
	16 Incidence of malignant melanoma	15	10.4	14.8	31.8		3.6
Disease and poor health	17 Hospital stays for self-harm	98	60.8	188.0	596.0		50.4
	18 Hospital stays for alcohol related harm	642	461	637	1,121		365
	19 Drug misuse	399	3.8	8.6	26.3		0.8
	20 Recorded diabetes	7,701	6.1	6.0	8.7		3.5
	21 Incidence of TB	5	8.9	15.1	112.3		0.0
	22 Acute sexually transmitted infections	1,176	743	804	3,210		162
	23 Hip fractures in people aged 65 and over	123	555	568	828		403
Life expectancy and causes of death	24 Excess winter deaths (three year)	48	13.3	16.5	32.1		-3.0
	25 Life expectancy at birth (Male)	n/a	79.2	79.2	74.0		82.9
	26 Life expectancy at birth (Female)	n/a	82.4	83.0	79.5		86.6
	27 Infant mortality	6	2.5	4.1	7.5		0.7
	28 Smoking related deaths	229	350	292	480		172
	29 Suicide rate	11	7.6	8.5			
	30 Under 75 mortality rate: cardiovascular	99	90.4	81.1	144.7		37.4
	31 Under 75 mortality rate: cancer	172	158	146	213		106
	32 Killed and seriously injured on roads	68	43.2	40.5	116.3		11.3

# Health Profile of Thurrock

- Population 160,849
- Increasing ethnic diversity
- Population growth in 0-15's and >65's
- Lower deprivation compared to England average
- Higher proportion of children in poverty (22%)
- Lower levels of statutory homelessness
- Levels of long term unemployment similar to England average



# Health Profile of Thurrock

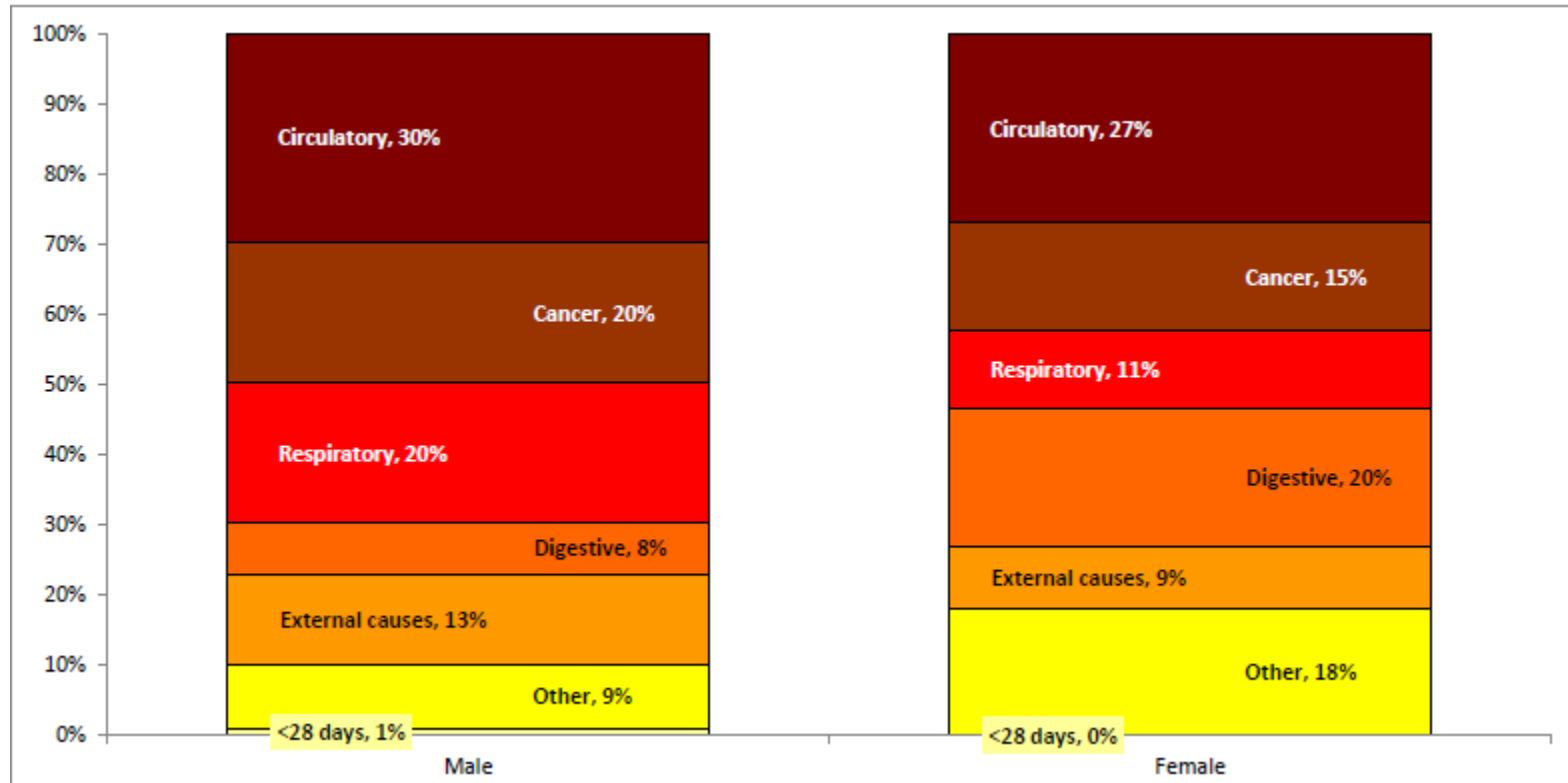
- Female life expectancy lower than the England average
- Life expectancy gap: 8.2 years for men and 7.7 years for women

# Health Profile of Thurrock

## Lifestyle behaviours

- 20.7% of adults smoke
- 46.6 % of adults do not undertake recommended levels of physical activity
- 25.1% adults eat 5 portions of fruit & vegetables a day
- 70.8 % of adults have an unhealthy body weight
- Better than England average rate of hospital stays for alcohol related harm and levels of drug misuse

# Causes of gap in life expectancy between the 20% most deprived and 20% least deprived wards in Thurrock



# Public Health Domains

- **Health Improvement:** lifestyles, specific diseases and risk factors, inequalities, wider determinants of health
- **Health Protection:** action to prevent or reduce the harm caused by communicable disease / environmental hazards, and emergency preparedness
- **Healthcare Public Health:** clinical effectiveness and efficiency, audit and evaluation to inform service planning
- All underpinned by public health intelligence

# The New Public Health System

- Local authorities : local leadership role
- Public Health England: a new national integrated public health system providing a range of specialist functions
- Four regional hubs and 15 centres
- Eight Knowledge & Information Network Teams
- Local links to Anglia & Essex Centre and Essex Health Protection Team

# Public Health Responsibilities of Thurrock Council

- Under the Health and Social Care Act 2012, from 1<sup>st</sup> April 2013, unitary and upper tier authorities have:
- A duty to improve the health of the local population
- A duty to protect the health of the local population
- Provide a number of mandatory services

# Public Health in Thurrock Council Mandatory Services

- From 1<sup>st</sup> April 2013 responsible for mandatory public health services:
  - Access to sexual health and contraceptive services
  - The National Child Measurement Programme
  - NHS Health Check Assessments
  - Duty to ensure plans to protect health of population
  - Public health advice to NHS Commissioners

# Sexual Health and Contraceptive Services

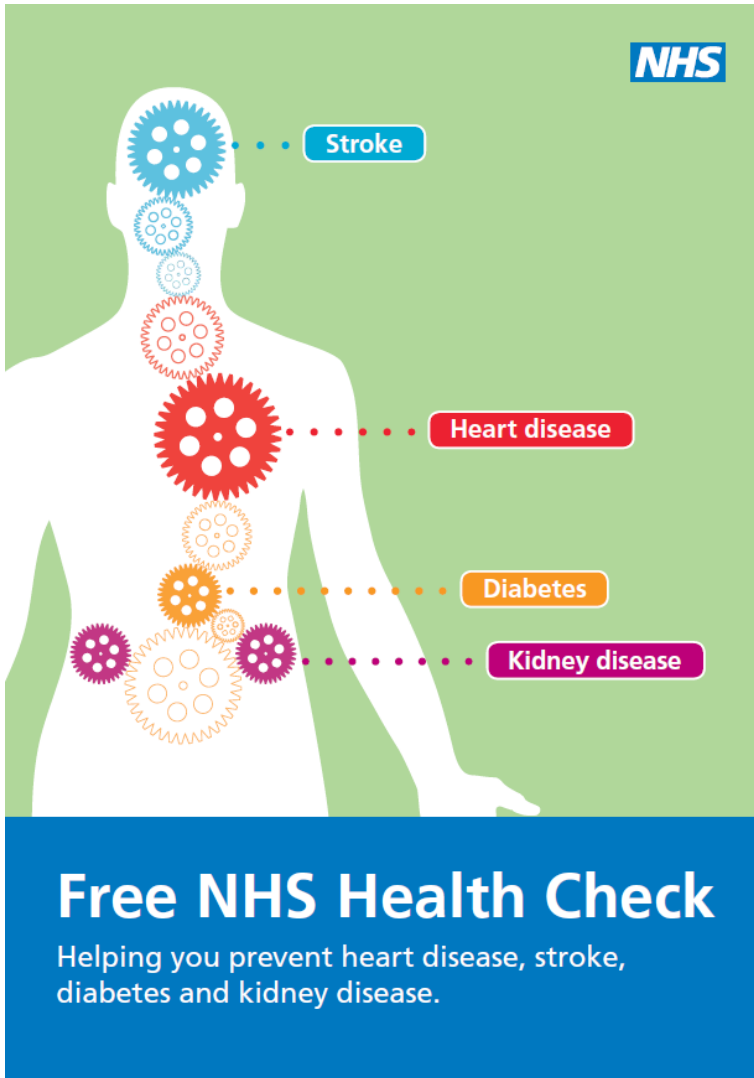
- Genitourinary Medicine Service and community contraceptive and sexual health services commissioned from North East London NHS Foundation Trust
- Chlamydia screening programme
- Out of area attendances



# National Child Measurement Programme

- Measure and weigh children in Reception (age 4-5) and Year 6 (age 10-11)
  - Use data to inform national policy and locally to inform planning /commissioning services
- 2012/13 results for Thurrock:
- 12.5% in Reception and 15.7% Yr 6 overweight (13.0% and 14.4% in England)
  - 9.6% in Reception and 19.8% Yr 6 obese (9.3% and 18.9% in England)

# NHS Health Check Programme



The graphic features a white silhouette of a human figure against a green background. Inside the silhouette, four colored gears represent different health conditions: a blue gear in the head for 'Stroke', a red gear in the chest for 'Heart disease', an orange gear in the abdomen for 'Diabetes', and a purple gear in the lower back for 'Kidney disease'. Each gear is connected to a colored dotted line that points to a corresponding colored label box. The NHS logo is in the top right corner. At the bottom, a blue banner contains the text 'Free NHS Health Check' and 'Helping you prevent heart disease, stroke, diabetes and kidney disease.'

**NHS**

Stroke

Heart disease

Diabetes

Kidney disease

**Free NHS Health Check**  
Helping you prevent heart disease, stroke, diabetes and kidney disease.

Eligible population:

- 40-74yrs
- Not already diagnosed
- Invited every 5 years
- Tests include blood pressure, cholesterol, body mass index, plus questions on family history and lifestyle behaviours
- Given level of risk
- Appropriate advice and management of risk factors

# Duty to protect the health of the population

- Duty includes minor outbreaks of infectious disease to full-scale emergencies
- Key role of Public Health England/ Essex Health Protection Team
- Local Health Resilience Partnerships in place to facilitate health sector preparedness
- LHRPs are co-chaired by a lead DPH and NHS England Area Team lead director for EPRR

# Public Health Advice to NHS Commissioners ('Core Offer')

- Provide specialist public health advice to commissioners on priorities for health spending
- Develop care pathways, policies and guidelines to improve health outcomes
- Produce high quality evidence summaries for exceptional treatment requests using ethical and legal principles
- Provide healthcare audit, evaluation and research
- MOU with Thurrock CCG for 'core offer'

# Other Public Health Responsibilities of Local Authorities



# Tackling Lifestyle Factors

- Tackling smoking and obesity are the key public health priorities in the Thurrock Health and Wellbeing Strategy
- Focus over last 12 months on developing a Thurrock Healthy Weight and Thurrock Tobacco Control Strategy
- Public Health Responsibility Deal
- Making Every Contact Count
- Signatories of Local Authority Tobacco Control Declaration
- 'Beat the Street' – to increase physical activity

# Healthy Child Programme (0-5) /5-19

## 5-19

- School nursing service : new service specification and re-commission service from 1<sup>st</sup> April 2015

## 0-5

- Currently commissioned by NHS England - will transfer in October 2015
- Family nurse partnership

# Public Health Intelligence

- Public Health Outcomes Framework
  - 2 high level outcomes and 4 domains
- Joint Health & Wellbeing Strategy – informed by JSNA
- Annual Public Health Report –statutory
- Pharmaceutical needs assessment – publish by 1<sup>st</sup> April 2015



# Other Public Health Activities in 2013/4

- Public health team links to each DMT
- Well homes initiative with private sector housing
- Workforce health: 'New Year – New You'
- Service reviews
- Links with emergency planning on cold weather and heat wave plans
- Over 75's health needs assessment with Thurrock CCG



THANK YOU  
ANY QUESTIONS?